

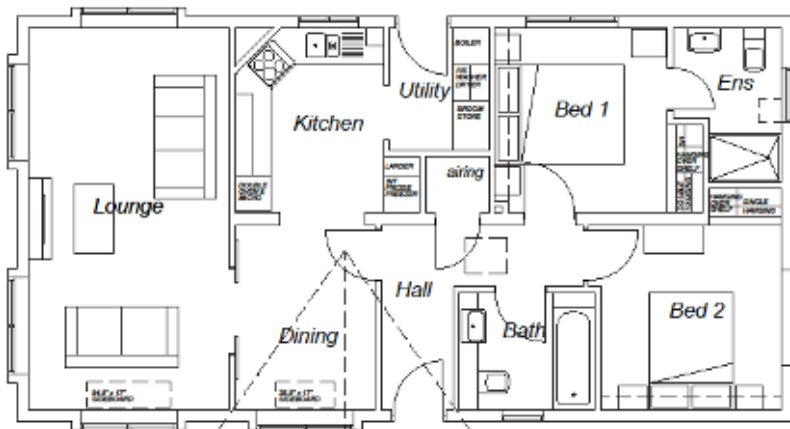
Orchard Park, Twigworth, Gloucester

£269,950



## Oakgrove Waverton 42 x 22

Modern luxury kitchen with fully integrated appliances,  
& Quartz Worktops  
Large windows to front  
Utility room leading out to garden  
2 double bedrooms,  
Ensuite shower room to the Master Bedroom  
Canaxel low maintenance exterior



## 36 The Ribstons

Home arriving August 2022

- Adjacent garage with power, light with the option of an electric up and over door.
- Turfed front garden
- Landscaped to the rear
- Metered utilities
- Fibre Broadband
- Mains Natural Gas
- Band A council Tax
- Pet Friendly Park
- Pitch fee £209.96 pcm

*The images shown above are of a similar property but are not the actual home.*

Call us on  
01452 730605  
[www.parkhomelife.com](http://www.parkhomelife.com)



Park Home Life, Orchard Park, Tewkesbury Road, Twigworth, Gloucester, GL2 9QP