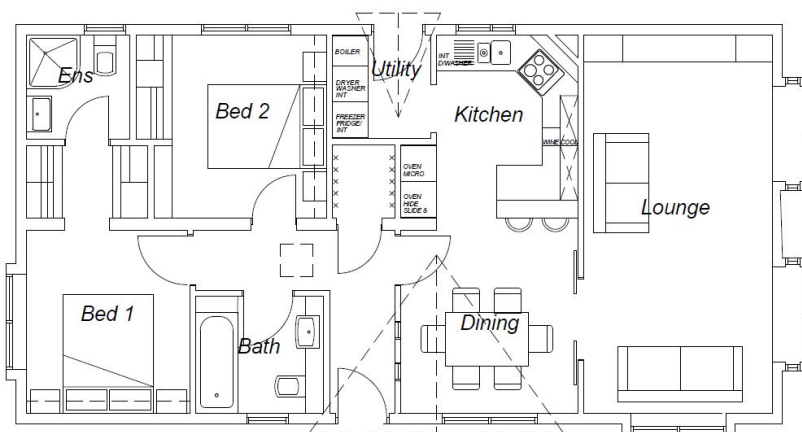




## Oakgrove Waverton

### 42 x 22

Modern luxury kitchen with fully integrated appliances,  
 & Quartz Worktops  
 Deep bay windows to front  
 Utility room leading out to garden  
 2 double bedrooms,  
 The Master has en-suite shower room  
 and walk-through wardrobe



## 9 The Ribstons

- Adjacent garage with power, light with the option of an electric up and over door.
- Turfed front garden
- Turfed rear garden
- Metered utilities
- Fibre Broadband
- Mains Natural Gas
- Band A council Tax
- Pet Friendly Park
- Pitch fee £194.77 pcm

*The images shown above are of the same model of home but are not the actual home.*

*The actual home is being delivered to Orchard Park in January 2022, so please do register your interest and be one of the first to have a private viewing*

Call us on  
 01793 722 100  
[www.parkhomelife.com](http://www.parkhomelife.com)

